



# WEBFLEET

## THE SMARTEST WAY TO MANAGE YOUR VEHICLES AND MOBILE WORKFORCE

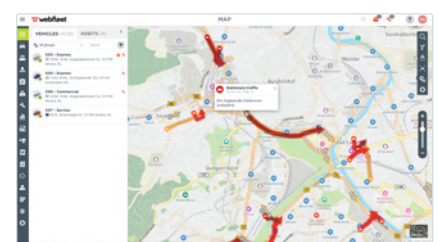
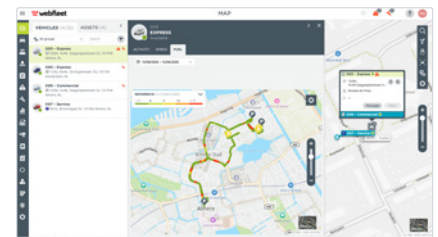
Our state of the art SaaS fleet management solution, with best-in-class user interface, is inspired by two decades of working together with customers to achieve more for better fleet management. WEBFLEET is everything you need to manage your vehicles in the cloud, in real time. It allows you to monitor reports and dashboards, manage orders/workflow, and improve driving behaviour, safety, and service. Helping you save fuel and reduce costs.

## BEST-IN-CLASS USER INTERFACE

- A future proof platform with a completely renewed interface, based on the latest HTML5 technology and driven by continuous innovation.
- Simple and clean interface, with minimised clicks for faster working.
- Intuitive functionality, means it is more accessible for greater impact across your business.
- User rights management and state-of-the-art data handling ensures the highest level of data privacy and data security.
- Fast access to the right information.

## MAP VIEW

Know where your vehicles are and where they have been. Different map options such as WEBFLEET, Google inc. Street View and Satellite maps are enriched with traffic information, giving you a more detailed view on what's happening on the roads. Toggle between different types of information on the map such as traffic, addresses and areas and create specific views, so you only see the information you need.



## DASHBOARD

WEBFLEET's dashboard gives an overview of performance at a glance. Up to 27 KPIs can be used to track the performance of vehicles, individuals, benchmark teams or give a simple overview. This helps you to track real time performance against your pre-defined KPIs.



Let's drive business. Further.

[webfleet.com](http://webfleet.com)





## TECHNICAL REQUIREMENTS

- Requires a PC with internet access (DSL, Cable)
- Runs in web browser - no software installation
- CPU speed at least 1 GHz
- RAM at least 1 GB
- Screen resolution at least 1024x768 (optimized for 1280x1024)

## REPORTING

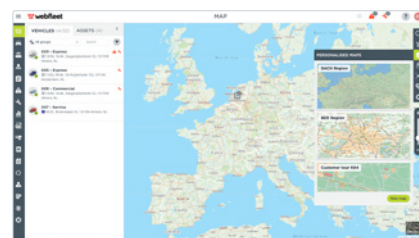
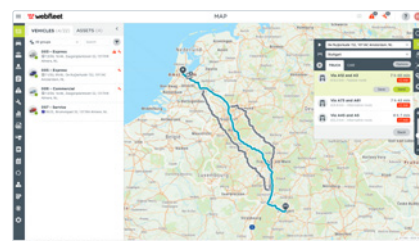
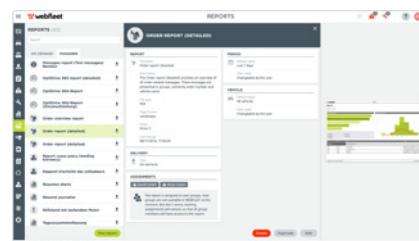
WEBFLEET gives you instant access to the information that matters, meaning you can spot trends over time and use real-time information to make smarter and more informed decisions. You can instantly download or schedule reports to help you stay on top of everything - from fuel efficiency and legal compliancy to quality of service.

## MANAGE ON THE MOVE

WEBFLEET is optimised so you can manage your fleet on any tablet, laptop or desktop computer by entering WEBFLEET through a web browser.

## SEND ROUTES DIRECT TO DRIVERS\*

- Plan accurate routes in WEBFLEET by adjusting multiple variables such as location, time of departure/arrival, traffic and vehicle type.
- Get a choice of alternative routes, as well as suggested fastest route with traffic.
- Customise your route by simply adding new waypoints, or dragging and dropping existing waypoints on a route. Then choose from guided or forced route options.
- Send planned routes directly to a PRO Driver Terminal\* to keep your drivers on the right track.



\* Available on PRO 5 / 7 / 8 devices.

## PERSONALISED MAP VIEWS

- Create your own saved map view to reach information you need fast.
- Switch between vehicle groups or areas, without needing to adjust the map filters and zoom levels.

Let's drive business. Further.

[webfleet.com](http://webfleet.com)

